

# DEPARTMENT OF PSYCHOLOGY

## *Promoting Healthy Minds and Society through Psychological Science*

The Psychology Department discovers the fundamental principles underlying human behavior and how one can change behavior in ways that enhance our lives and society. Our undergraduate and graduate instructional programs train science-minded students to enter the workforce, and to create new leadership for a better world.

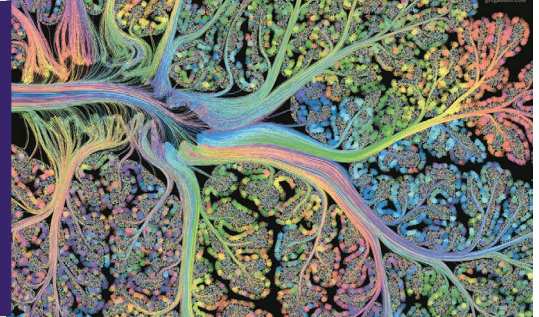


Image by Greg Dunn and Brian Edwards

## Education

### Undergraduate Program

Psychology is among the top departments in undergraduate teaching at the UW. In 2018-2019, the department had 12,259 course enrollments and continues to be the leading department offering faculty-supervised undergraduate research. Our students also gain hands-on experience via undergraduate teaching opportunities and a variety of volunteer and internship positions.

The department offers both Bachelor of Science and Bachelor of Arts degrees to satisfy a wide range of student interests. The B.S. program provides greater emphasis on laboratory research and statistics, and as such provides a foundational core for students interested in pursuing careers in research or other fields requiring more laboratory and quantitative training. In 2018-2019, over 1,000 students enrolled in experiential learning opportunities for furthering their educational experience through research, fieldwork and peer teaching. The B.A. program provides greater emphasis on applications of general scientific knowledge in psychology and as such provides a foundational core for students interested in a range of careers requiring broad understanding of psychological theories and their application.

Our courses are also popular with non-majors: in 2018-2019, nearly 3,300 students were enrolled in Psychology 101 (Introduction to Psychology), making it the most popular course on campus. Special programs and services for undergraduates include our departmental Honors Program, Writing Center, Statistics and Methods Lab, Undergraduate Study Center, and advising support.

### Graduate Program

The department's Clinical Psychology Graduate Training Program has been ranked in the top ten programs in the nation for the past ten years, according to *U.S. News and World Report*. Our graduate program offers not only traditional doctoral education and research training in various subfields, but emphasizes interdisciplinary approaches to most effectively address society's most pressing challenges. Advanced data science, diversity science specialization, and a quantitative minor are also available to students. Our Ph.D. graduates go on to postdoctoral positions in academia, faculty positions, industry jobs, and clinical work.

### STUDENTS (Winter 2020)

982	Undergraduate majors
100	Doctoral students

### DEGREES AWARDED (Winter 2020)

499	Bachelor degrees
9	Master of Science degrees
15	PhD degrees

### UNDERGRADUATE HONORS (2018-2019)

3	Husky 100 honorees
5	Ronald E. McNair Scholars
8	Mary Gates Research Scholars
14	Honors theses presented

### GRADUATE STUDENT HONORS (2018-2019)

1	UW Excellence in Teaching Award
1	Graduate Medalist
2	Ford Foundation Fellowships*
6	National Science Foundation Graduate Research Fellowships *
5	National Research Service Awards*
74	Journal articles published
6	Book chapters published

\*newly awarded

## Faculty

Faculty awards and honors include:

- 33 Faculty elected to 104 Fellow positions in professional organizations
- 8 Distinguished Contributions Awards from the American Psychological Association
- 7 UW Distinguished Teaching Awards
- 3 Fellows elected to the American Academy of Arts and Sciences
- 2 PATHWAY to Independence Awards
- 2 CAREER Awards from the National Science Foundation
- 1 Clinic Innovation Award from the Association of Psychology Training Clinics
- 1 Grawemeyer Award in Psychology
- 1 American Association for the Advancement of Science Fellow

## Research

The success of our research programs places Psychology Department research among the top three departments in the College of Arts & Sciences in terms of grant and contract awards (over \$12 million annually). Current research initiatives seek to:

**Promote social equality** by understanding how prejudice and bias develop and can be changed, discovering new approaches that reveal implicit bias and disparities, and solving social justice issues;

**Optimize human potential** by increasing one's resilience: in young children and adults, to address mental health disparities, and in vulnerable conditions; and

**Understand behavior through brain science** to enhance communication, make better decisions, and improve learning and emotional stability.

## Community Relations and Outreach

The Psychology Department is committed to closing the gap between our research discoveries and their impact on society. Our award-winning graduate training clinic and faculty-directed research clinics and centers use evidence-based research to create innovative therapies and behavioral interventions that promote mental health and improve lives.

We also collaborate with community partners to translate research findings into practices that improve the social, emotional, and cognitive development of children, individuals, and communities. Psychology faculty members also provide workshops in schools, companies, and community organizations, and provide expert witness services in the legal system. We offer community events, including sharing the work of our faculty and other experts from around the world through our annual Allen L. Edwards Public Lecture Series. Through these pathways, we aim to not only make groundbreaking strides in psychological science, but make lasting, positive societal changes that we can share with the world.

## Support Psychology

Philanthropic support of the Psychology Department plays a significant role in advancing our mission to promote healthy minds and society through psychological science. By making a gift, you can help promote world-class research, attract and retain the best faculty and students, and train the next generation of leaders in psychology. Visit <https://psych.uw.edu> to learn more.

## FACULTY (Winter 2020)

27	Professors
3	Research Professors
13	Associate Professors
2	Research Associate Professors
3	Assistant Professors
2	Principal Lecturers
27	Emeritus Faculty
47	Adjunct Faculty
128	Clinical Faculty

## MAJOR RESEARCH AND GRADUATE TRAINING AREAS

Adult Clinical

Animal Behavior

Behavioral Neuroscience

Child Clinical

Cognition and Perception

Developmental

Quantitative

Social and Personality



Photo by Colette Cosner

last update: April 2020